



POCKETPATH™ Hopper Car Connector Data Sheet

CUSTOMER DATA

Company: _____ Date: _____
Contact: _____ Ph: _____
Title: _____ Ext: _____
Address: _____ Fax: _____
City, St, Zip: _____ E-m: _____

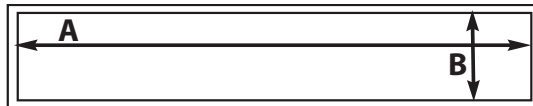
I. MATERIAL INFORMATION

1. Type of Material: _____
2. Does the Equipment need to be Food-Grade? YES NO
3. Is an Aligner desired (moves the POCKETPATH™ 3-4" either direction)?
 Pneumatic Manual None
4. Is Vibration needed to aid the flow of material? YES NO
5. Is a Hopper Car Gate Opener needed to assist with gate opening? YES NO

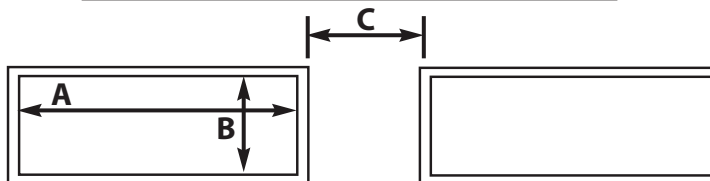
II. RAILCAR INFORMATION

1. Type of Railcar: _____
2. Number of Hoppers / Pockets per Car: _____
3. Number of Gates per Hopper / Pocket: Single Double
4. Do the Gates / Capstans slide as they open? YES NO
5. Based on the diagram below, please give us the Inner Dimensions of the Gate Openings:
Single Opening: Length (A) _____ X Width (B) _____
Double Opening: Length (A) _____ X Width (B) _____
Distance between openings (C): _____

Single Opening



Double Opening



COMPLETE DIMENSIONAL INFORMATION OR SUPPLY DRAWINGS

III. RECEIVING HOPPER INFORMATION

For new installations or modifications, WORKMASTER® strongly recommends using the following dimensions for the Receiving Hopper Openings:

- For A: Make Opening:**
 PPS - 24: A = 42 in, B = 22 in, F = 3 in minimum
 PPS - 30: A = 42 in, B = 30 in, F = 3 in minimum
 PPSR - 18: A = 15 in, B = 15 in, F = 3 in minimum
 PPD - 18: A = 16.5 in, B = 12.5 in, C = 16 in, F = 3 in minimum

Existing System New Installation

Number of Openings at the top of the Hopper: _____

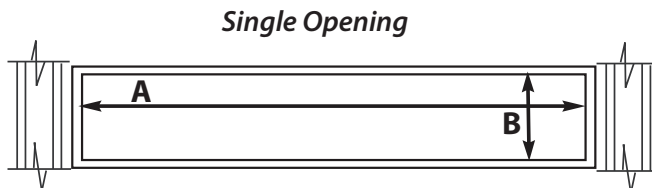
Method of moving material out of the Hopper (eg, conveyor, airslide, [other]): _____

Based on the nearby diagrams, please give us Inner Dimensions of the Receiving Hopper Openings:

Single Openings:

Length (A) _____ X Width (B) _____

Bottom of rail to top of Hopper (F): _____

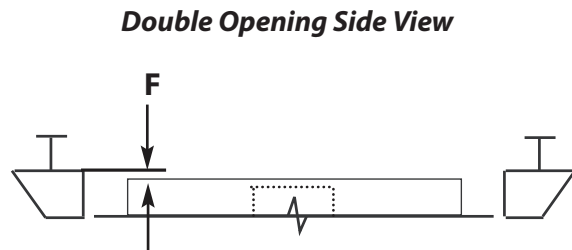
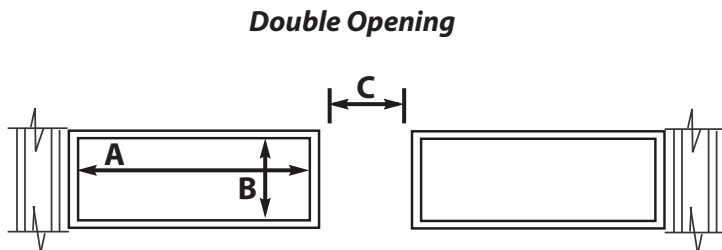


Double Openings:

Length (A) _____ X Width (B) _____

Distance between Openings (C): _____

Bottom of rail to top of Hopper (F): _____



If necessary, attach an extra sheet of sketches or information for special applications or multiple layouts. Include irregular Hoppers or Aligners that operate beyond normal use.

Complete this form and fax to WORKMASTER® at 888.476.9219 ATTN: Customer Service, or e-mail to workmaster@info.net.

